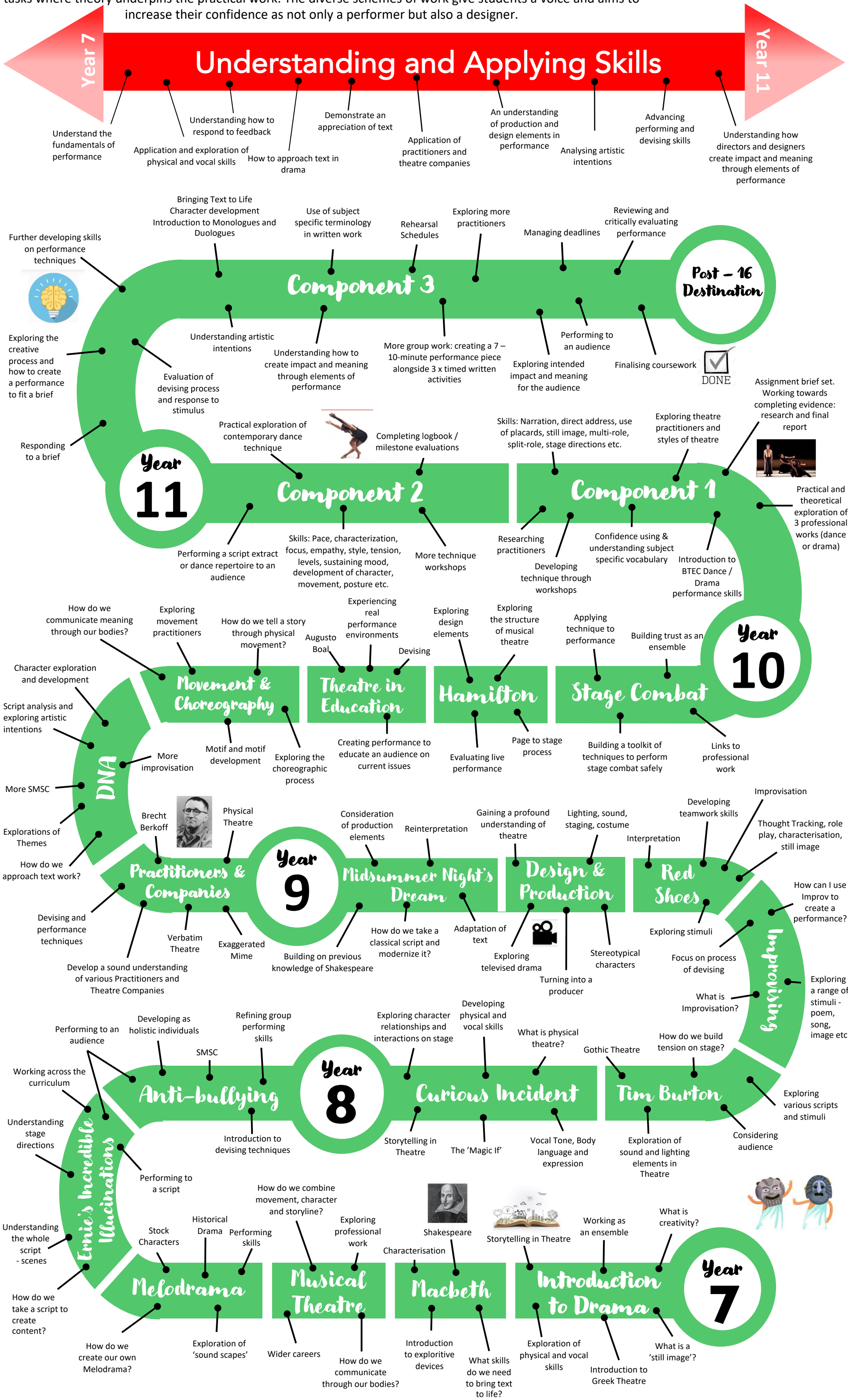


Performing Arts Learning Journey



St Cuthbert Mayne
Educating for life in all its fullness

Performing Arts at StCM has a strong emphasis on creating a holistic performer where students are creating, performing and appreciating theatre. Our schemes of learning are driven by a desire to value and nurture the creative potential in every student, building tolerance of diversity, bravery of spirit and resilience of focus. Drama and Dance allow students to learn within practical sessions but also within reading, writing and reviewing tasks where theory underpins the practical work. The diverse schemes of work give students a voice and aims to increase their confidence as not only a performer but also a designer.



Compassion - Integrity - Courage - Creativity